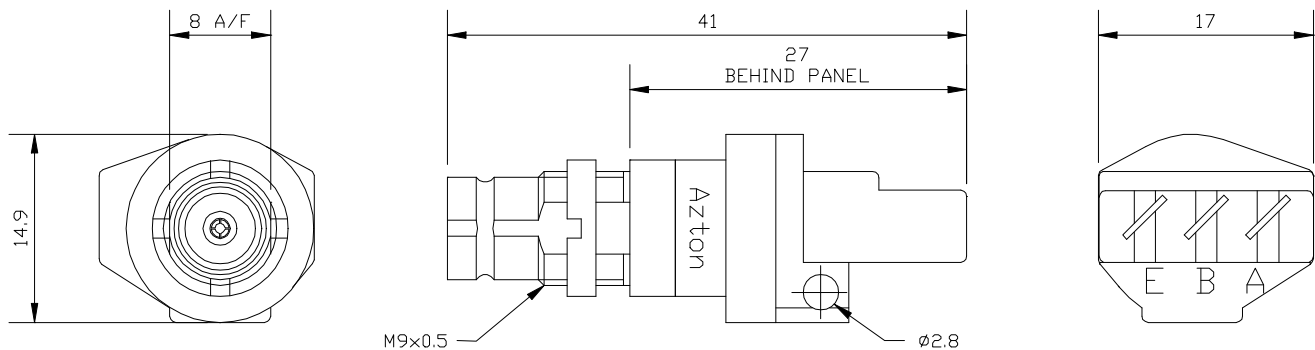


## Balun, 75/120W, 2-8-34Mbit/s 1.6/5.6 (f) Bulkhead to 3 Pole IDC



### PRODUCT DESCRIPTION

This Balun converts E1, E2 and E3 G.703 signals from unbalanced 75Ω coaxial to balanced 120Ω twisted pair transmissions. A bi-directional device requiring no external power, it allows the user to connect telecommunications equipment with mismatched interfaces or convert a coaxial DDF to twisted pair. Designed for mounting in a DDF panel this product offers the following features:-

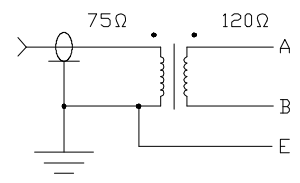
- coax to twisted pair conversion
- exceeds G.703 requirements
- > 30dB return loss 0.3 to 10MHz
- shielded construction
- genuine Krone® IDC
- 1.6/5.6 (f) connector to IEC 169-13
- 75Ω to 120Ω impedances
- < 0.35dB E1 insertion loss
- > 1.25µm of gold plating on pin
- designed for long life
- small size
- 2, 8 and 34Mbit/s data rates
- > 60dB cross talk
- teflon coaxial insulators
- built for high reliability

### OPERATING CONDITIONS

Matching Impedance:	75 ohm unbalanced coaxial to 120 ohm balanced twisted pair
Bit Rate:	2Mbit/s (E1), 8Mbit/s (E2) and 34Mbit/s (E3) per ITU-T G.703 Line Code
Signal Level:	2.37V p-p (2&8Mbit/s), 1V p-p (34Mbit/s) at the coaxial end per G.703
Working Temperature:	-30°C to 75°C

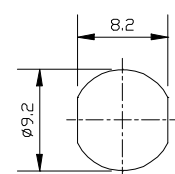
### ELECTRICAL SPECIFICATIONS

Insertion Loss:	< 0.35dB from 51kHz to 51.55MHz and in both directions < 0.15dB for 2&8Mbit/s fundamental, < 0.2dB for 34Mbit/s fundamental as per G.703
Return Loss:	Exceeds G.703 requirements in both directions > 21dB from 51kHz to 102kHz > 26dB from 102kHz to 17.184MHz > 21dB from 17.184MHz to 34.368MHz and > 19dB from 34.368MHz to 51.55MHz
Pulse Shape:	Exceeds G.703 requirements for 2Mbit/s, 8Mbit/s and 34Mbit/s
Cross Talk:	> 60dB from 51kHz to 51.55MHz, 2 baluns 15mm apart
Isolation Voltage:	< 250V DC



### MECHANICAL SPECIFICATIONS

Coaxial Connector:	1.6/5.6 female to IEC 169-13 Body: Brass, Plated Cu/Ni5/Au0.8 and Cu/Ni2/Sn5 Pin: Beryllium Copper, Plated Cu/Ni5/Au1.25 Insulator: Teflon Mating Cycles: 500min
IDC Connector:	Wire: Conductor Ø 0.4 to 0.65mm, Insulation Ø 0.7 to 1.4mm Contacts: Silver Plated Moulding: Polyester White Mating Cycles: 50min
Mouldings:	Noryl Black



PUNCH DETAIL

### TERMINATION

IDC:	Krone Connection Tool 6089 2 003-00 or 6417 1 810-02
Panel Mounting:	1.6/5.6 Tube Spanner

<sup>a</sup> registered trade mark of the Krone Company